



PARENT HANDBOOK

Grade 11

EUKA FUTURE LEARNING

Senior Years



WELCOME

Welcome to Euka!

We are absolutely thrilled to welcome you and your family into our supportive homeschooling community.

This is the beginning of an exciting new chapter filled with independence, growth, future planning, and exciting opportunities.

The senior years are a unique stage of learning. Students are beginning to shape their future pathways, discover their strengths, and work towards goals that align with their interests and ambitions. At Euka, we believe senior education should feel flexible, supportive, and empowering rather than overwhelming.

This handbook has been designed to guide your family through every aspect of the Euka Grade 11 and 12 experience. Inside, you'll find information about:

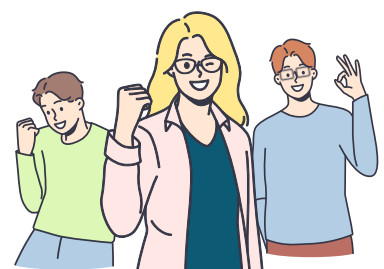
- Subject selection
- Senior learning pathways
- Assessments and assignment submissions
- University pathway options
- Certificates and transcripts
- Student and Parent Portal navigation
- Flexible scheduling and study support
- Frequently asked questions

You are not just enrolling in a program, you are joining a partnership.

At Euka, we understand that every student's journey looks different. Whether your child is preparing for university, exploring career pathways, building confidence after difficult schooling experiences, or simply seeking a more flexible way to complete their education, we are here to support you every step of the way.

Our experienced teachers and friendly support team are here to guide, encourage, and assist your family throughout the senior years.

We can't wait to see everything your child achieves.



Just enrolled, now what?

Once you've enrolled via our website, you'll receive a **Welcome to Euka** email with everything you need to get started. This email will guide you through the final steps of your enrolment, including entering your student's details and generating their unique Euka Student ID. Once completed, you'll have access to both the **Parent Portal** and **Student Portal**.

Understanding Your Two Accounts

You'll have two portals working alongside each other, each with its own purpose. Use the cards on the right to see what lives where.

NEED A HAND?

For more guidance on getting started and navigating the Parent and Student Portal, please visit our [Help Centre](#).

STUDENT PORTAL

For lessons and learning materials

This is where your child will access their lessons and learning materials each day. For senior students, parents typically don't need to log in to the Student Portal — progress tracking and activity sheets are also available directly in the Parent Portal.

PARENT PORTAL

Your admin hub

This is your admin hub, where you can manage payments, track progress, access reports, purchase additional terms or grade levels, select your child's subjects, and view any premium services linked to your account.

Subject Selection

Euka offers an extensive range of 20 senior subjects, allowing students to build a program tailored to their interests, strengths, and future goals.

For Grade 11 students, up to six subjects can be completed, with English being the only compulsory subject. If you are doing a subject as an external course, you can absolutely replace a Euka subject with that course.

How Subject Selection Works

There are two ways to select senior subjects:

1

During Enrolment. Families can select subjects during the enrolment process.

2

After Enrolment. Families can log into the Parent Portal after enrolment and complete subject selection there and/or [change their subjects](#).

Once subject selections are finalised, students will gain access via their Student Portal to:

- Subject lessons (with integrated textbook content)
- Course materials
- Assessment information

If your child is unsure about subject choices or future pathways, our team is always happy to provide guidance.

How does the Euka Individual Student Portal work?

Your full course materials are available instantly once you enrol and select subjects, ready and waiting in each child's own personalised Student Portal.

This easy to use online platform is designed to make homeschooling simple and motivating for the whole family. At a glance, you can see exactly what needs to be covered each week, so you always know where you're up to without any guesswork.

At a glance, students can:

- See what needs to be completed each week
- Mark lessons as complete
- Monitor overall course completion
- Track assignment progress (Assessed Pathway only)
- Submit assignments (Assessed Pathway only)
- Access teacher feedback on submitted assignments (Assessed Pathway only)

Unlike traditional schooling, the Euka senior program is fully self-paced. There are no fixed school hours, strict term dates, or classroom schedules.

This flexibility allows students to:

- Study at times that suit them best
- Work around employment, sport, travel, or health needs
- Spend more time on challenging subjects
- Move faster through subjects they enjoy
- Build independence and time-management skills

ALWAYS HERE TO HELP

The Student Portal is your family's central hub, designed to be clear, flexible, and supportive of each child's unique learning journey. If you ever need help navigating it or would like to make adjustments, our team is always [here to help](#).

The program is designed to support real learning and genuine understanding, not pressure or memorisation. **You've got this, and we've got you!**



PART TWO

Building your weekly rhythm

How time is shaped in the senior years, and the support that surrounds it.

WEEKLY PLAN

What does a weekly plan look like?

We know that a typical school day from 9 am to 3 pm isn't spent entirely on academic learning. Once you factor in recess, lunch, assemblies, rehearsals, and other activities, only part of the day is dedicated to core teaching. With this in mind, the Euka program is thoughtfully designed to be efficient yet relaxed, leaving plenty of time each day for your child to follow their interests, develop their talents, and simply enjoy being a child.

Unlike traditional schools, students are not required to sit in classrooms from 9 am to 3 pm each day. Instead, the Euka senior program is designed to be efficient, focused, and adaptable to each student's individual routine and goals.

Many senior students balance learning alongside: Part-time employment | Sport or performing arts | Mental health support | Travel | Family commitments | Personal projects | Volunteer work. Because of this, the Euka program is intentionally flexible.

Example Weekly Study Structure

This is only an example.

DAY	CORE 1	CORE 2	FOCUS
Monday	English	Subject of choice	Assignment work
Tuesday	English	Subject of choice	Revision work
Wednesday	English	Subject of choice	Assignment work
Thursday	English	Subject of choice	Revision work
Friday	English	Subject of choice	Assignment work

This is simply an example and can be adjusted to suit your family's routine and the student's individual goals. Students can study during mornings, afternoons, or evenings, complete more work on some days and less on others, adjust their schedule around family life and commitments, take breaks when needed, and move ahead at their own pace.

Supporting Independent Learning

The senior years are an important time for students to build:

- Independence
- Motivation
- Time management
- Organisation skills
- Personal responsibility

Some students naturally thrive with independence immediately, while others need more support and structure at first.

Wherever your student is starting from is completely normal.

Many families find success by:

- Creating a weekly study routine
- Setting small daily goals
- Using calendars or planners
- Scheduling assignment check-ins
- Encouraging balance between study and downtime

CONFIDENCE GROWS OVER TIME

The Euka program is designed to gradually help students become more confident and self-directed over time.

In traditional schools, subjects are often broken into short lessons due to timetable pressures. We believe children learn more effectively when they can fully immerse themselves in a topic without interruption. That's why most subjects are not divided into strict time blocks. The only exceptions are Maths and English, which follow a steady, alternating structure to support consistent progress.

SUPPORT

What support does Euka offer?

We're here to support your family every step of the way. Our experienced teachers and friendly support team are available to assist with:

- Subject guidance
- Technical support
- Assignment questions
- Pathway advice
- University entry support
- Learning support adjustments
- Administrative assistance

Whether you have questions about the program, need help navigating the platform, or are looking for advice on your child's educational journey, our team is always here to help, so you never feel like you're doing it alone.



GET IN TOUCH

You can contact us anytime via our [Contact Us](#) page.

At Euka, we believe families should feel supported, encouraged, and confident throughout their homeschooling journey, and our goal is to be a true partner in your home education experience.



PART THREE

Understanding Euka's Two Senior Pathways

At Euka, students do not complete a government-issued HSC or receive an ATAR, as those pathways require face-to-face mainstream schooling and external examinations. Instead, we offer two flexible senior pathways designed to suit different goals and learning styles.

The Assessment-Free Pathway

PATHWAY OVERVIEW

Flexible, low-pressure, recognised completion.

This pathway is ideal for students who:

- Do not intend to apply for university
- Prefer reduced academic timelines.
- Thrive in flexible learning environments
- Are focused on employment, TAFE, entrepreneurship, or personal development

How It Works

- The program is fully self-paced
- There are no strict deadlines or term dates
- Lessons and activities are managed independently by the student and/or parent
- Parents oversee learning progress
- Students complete lessons at a pace that suits them

Assessments

Each subject includes one assignment per term; however:

- assignments are completely optional
- Parents mark assessments using the supplied marking criteria
- No teacher grading is required

This pathway is designed to reduce stress while still providing structure, meaningful learning, and recognised completion documentation.

The Assessed/University Pathway

PATHWAY OVERVIEW

Teacher-marked, university-ready, formally graded.

This pathway is ideal for students who:

- Know they want to move into TAFE or university-level study
- Want to keep their options open for the future
- Value detailed teacher feedback on their work
- Would benefit from formal academic reporting and graded transcripts

How It Works

All Assessment tasks are provided in the Student Portal upon enrolment and can be completed and uploaded for marking at any time (self-paced, no fixed due dates). Assessments are summative and measure achievement of course outcomes. A Marking criteria and Support document is provided with every task. General Euka Assessment Policy applies (extensions/illness/misadventure exemptions available on request). Students completing the Assessed pathway will submit all tasks.

- The course is entirely self-paced
- There are no strict deadlines or term dates for lessons or assignments
- Students complete and submit assignments through the Student Portal

Assessments

Students submit:

- One Assignment per subject, per term
- Through the "Assignments" section of the Student Portal

Teacher Marking & Feedback

Assignments are marked by Euka teachers. Families can expect:

- Feedback usually within 1-3 business days and 1-2 weeks during peak periods
- Constructive comments and guidance
- Opportunities for improvement and resubmission

The goal of our assessments is to foster growth, build confidence, and support continuous progress throughout the learning journey. As a result, if a student receives below 60% or simply wants to improve their result, they are encouraged to review the teacher's feedback, make any necessary adjustments, and resubmit the assignment. Our teachers will gladly re-mark the work and provide the updated grade.

A world of pathways.

Euka works closely with university colleges across Australia to provide alternative university entry pathways without requiring an ATAR. These partnerships help students transition confidently into higher education with additional academic support. Study in any State of Australia or study overseas. We have you covered.

How These Partnerships Work

Students generally:

1. Complete a Diploma program as their first year.
2. Transition directly into the second year of a Bachelor degree.

This pathway can provide:

- Smaller class sizes
- Extra academic assistance
- Lower stress entry requirements
- Flexible university preparation

REACH OUT BEFORE APPLYING

Please [contact](#) the Euka team directly for pathway support rather than contacting universities independently, as requirements and contacts vary between institutions.

Partner University Colleges

The full list of Euka's partner colleges across 11 countries.

AUSTRALIA

ACAP University College (Adelaide, Melbourne, Perth, Sydney)
Charles Sturt University (Melbourne, Sydney)
Curtin College (Perth)
Deakin College (Melbourne, Geelong Waterfront, Geelong Waurn Ponds)
Edith Cowan College (Perth)
Edith Cowan University English Centre (Perth)
Eynesbury College (Adelaide)
Eynesbury College | Adelaide University (Adelaide)
Griffith College (Brisbane, Gold Coast)
Hawthorn-Melbourne (Melbourne)
La Trobe College Australia (Melbourne, Sydney)
La Trobe University Sydney Campus (Sydney)
SAE University College (Adelaide, Brisbane, Byron Bay, Melbourne, Perth, Sydney + Online)
South Australian Institute of Business and Technology (Adelaide)
Sydney Institute of Business and Technology (Sydney)
Taylors College (Sydney)
Western Sydney University Sydney City Campus (Sydney)

CANADA

Fraser International College (Vancouver)
International College of Manitoba (Winnipeg)
SAE Vancouver (Vancouver)
Toronto Metropolitan University International College (Toronto)
ULethbridge International College Calgary (Calgary)
Western International College (London, Ontario)
Wilfrid Laurier International College (Waterloo)

GERMANY

Lancaster University Leipzig (Leipzig)
SRH International College (Berlin, Heidelberg, Munich)

NETHERLANDS

The Hague Pathway College (The Hague)
Twente Pathway College (Twente)

NEW ZEALAND

Christchurch College of English (Christchurch)
SAE Auckland (Auckland)
UC International College (Christchurch)
University of Waikato College (Waikato)

SINGAPORE

Curtin Singapore

SRI LANKA

Edith Cowan University Sri Lanka (Colombo)

UNITED ARAB EMIRATES

Murdoch University Dubai (Dubai)

UNITED KINGDOM

Anglia Ruskin University College (Cambridge)
Birmingham City University International College (Birmingham)
Brunel University London Pathway College (London)
Hertfordshire International College (Hertfordshire)
International College Portsmouth (Portsmouth)
International College Robert Gordon University (Aberdeen)
Keele University International College (Keele)
Manchester Metropolitan University International College (Manchester)
The College, Swansea University (Swansea)
University of Plymouth International College (Plymouth)

UNITED STATES

Queens College Global Student Success Program (New York)
SAE Institute (Atlanta, Chicago, Miami, Nashville, NYC)

INDONESIA

Deakin University Lancaster University Indonesia (Bandung)

Applying to Other Universities using Pathways

For universities outside our partnership network, Euka can still provide:

- Supporting documentation
- Academic transcripts
- University Preparation Certificates
- Alternative entry guidance

PATHWAY SUPPORT

Please [contact](#) the Euka team directly for pathway support rather than contacting universities independently, as requirements and contacts vary between institutions.





PART FOUR

Registration & reporting with confidence

How Government Registration and Reporting works in
Australia, and the Euka services that simplify both.

How Government Registration Works in Australia

In Australia, families who choose to homeschool are required to register their child with their state or territory's Department of Education. Each state has its own registration process, guidelines, and requirements, as they individually oversee homeschooling approval and ongoing compliance.

What does the registration process involve?

Families need to submit a homeschooling application along with learning plans for their child. These plans help demonstrate:

- How your child's learning will align with the Australian Curriculum
- Your understanding of your child's individual learning needs
- How you plan to support and facilitate their education

You won't need to provide past school reports as part of this process.

Documents required:

- **Scope and Sequence (Full-Year Learning Plan):** Outlines what will be covered across the year in line with the Australian Curriculum. This is provided by Euka for all enrolments.
- **Birth Certificate:** To confirm your child's identity
- **Individualised Learning Plan (ILP):** A personalised plan outlining your child's current level, goals, learning approach, and development

Creating your Individualised Learning Plan (ILP)

You have two options:

1 Use Euka's Government Registration Service. Available to purchase with any enrolment, this service simplifies the process. You'll complete a short questionnaire in your Parent Portal, and we'll generate a tailored Individualised Learning Plan for you to download and include in your application.

2 Create your own plan. You're absolutely welcome to do this yourself. Euka still provides your Scope and Sequence documents via the Parent Portal, and most state Departments of Education offer helpful templates and guidance to support you in writing your ILP.

Submitting your application

A QUICK NOTE ON SUBMITTING YOUR APPLICATION

While we're here to support you, the registration application must be submitted by the child's parent or guardian. Euka isn't able to lodge the application or communicate with the Department on your behalf.

Where to find more information

You can find detailed articles about each State's Registration process under the [Government Registration](#) collection.

For families living overseas

If you're currently residing outside of Australia, you won't be eligible to register as a homeschooler within Australia, even if you hold Australian citizenship. You're still very welcome to use the Euka program to support your homeschooling journey overseas — and the results travel with you.

If your family plans to return to an Australian school, the work your student completes through Euka is recognised and valuable for re-entry. And our **university partnership pathways are available to students studying outside Australia too**, so families overseas can still move directly into higher education through our partner colleges.



How Government Reporting Works in Australia

As a registered homeschooler in Australia, your state's Department of Education may require you to complete **reporting**, which involves showing evidence of your child's learning and progress.

Reporting is submitted directly to your state Department of Education and typically takes place around **10-12 months after your initial registration**. Your department will notify you when your reporting period is due.

What does reporting involve?

When it's time to report, you'll generally be asked to provide:

- Samples of your child's work
- Parent annotations explaining how your child approached and completed the work, including their level of understanding and progress

NON-ASSESSED PATHWAY

For students completing the Non-Assessed Pathway, assignments remain optional. However, we do strongly encourage students to complete as many assignments as possible to help consolidate their understanding and provide useful work samples for reporting purposes.

As assignments are not formally assessed in this pathway, feedback and commentary are provided by the parent or guardian as part of the reporting process.

You may also wish to contact your state's home education unit to confirm how many work samples or assignments they require when reviewing your reporting documentation.

ASSESSED / UNIVERSITY PATHWAY

For students completing the Assessed or University Pathway, assignments can also be used as valuable evidence of learning for reporting purposes.

In this pathway, students are able to include both:

- Their completed assignments
- The feedback and marks received from assessors

This can provide strong evidence of student progress, understanding, and achievement when submitting reports to your home education unit or for future study pathways.

Storing and Sharing Your Reporting Evidence

After assignments have been completed and marked, we strongly recommend storing these documents in a safe and easily accessible location. They may be useful in the future when your child applies for further education, courses, jobs, traineeships, or apprenticeships, as external organisations may request examples of their work or evidence of prior learning.

STATE DIFFERENCES

Reporting requirements can vary slightly depending on your state or territory, so we recommend reviewing our Help Centre article for more detailed guidance: [Reporting—When and How to Report](#).

Using Euka's Premium Reporting Service

Euka also offers an optional **Premium Reporting Service**, available to purchase with both single-term and full-year enrolments.

This service is designed to simplify the reporting process by providing:

- A dedicated reporting dashboard
- A space to upload work samples/assignments and add parent comments
- Guided prompts and comment templates to support your annotations

Once completed, your information is compiled into a **government-aligned report**, ready for you to download and submit to your state's Department of Education when required.

A QUICK NOTE ON SUBMITTING YOUR REPORT

While we're here to support you every step of the way, your government report must be submitted by the child's parent or guardian. Euka isn't able to submit reports or communicate with the Department on your behalf.

Please note that in some states, once a student is over the age of 17, they may no longer be required to register or report as a homeschooler with their Department of Education.

As requirements can vary between states, we do recommend contacting your state's Department of Education directly to confirm the eligibility criteria and any reporting obligations that may apply.



PART FIVE

Recognising the work you've done

Senior Secondary Certificates, transcripts, and how to access them through the Parent Portal.

Senior Secondary Certificates

Euka offers formal recognition for both senior pathways. Below is what your child will receive on completion.



ASSESSED / UNIVERSITY PATHWAY

Senior Completion Certificate

Awarded upon successful completion of Grade 12.

ASSESSED / UNIVERSITY PATHWAY

University Preparation Certificate

Issued upon completion of all lessons and required assignments in Grade 12. Commonly used to support university admissions, alternative tertiary entry pathways, and further education applications.

ASSESSED / UNIVERSITY PATHWAY

Academic Assessment Transcript

A formal teacher-graded academic summary of Grade 12 results and assessment outcomes.

ASSESSMENT-FREE PATHWAY

Grade Completion Certificates

Awarded upon successful completion of Grade 11 and Grade 12. Recognises the student's completion of their homeschool learning pathway.

Accessing Your Certificates & Reports

Once your child reaches the required milestones, you will receive an email notification advising that certificates and transcripts are available.

These can be accessed through the Parent Portal by:

- 1** Navigating to the **Reports** section
- 2** Selecting your student
- 3** Generating and downloading printable PDF copies of certificates or transcripts

HEADS UP

Please allow up to 1 hour for personalised certificate files to generate.

PART SIX

Grade 11 Subject Information

Subject Summary — 20 senior subjects across science, mathematics, humanities, business, design, the arts and community.

SUBJECT SUMMARY

Sciences & English

Five subjects in this faculty group. Term labels show the Year 11 course overview.

Biology

Ideal for students interested in biological sciences, medicine, environmental science, agriculture, or any career involving living systems. Suits students who enjoy practical investigations, scientific inquiry, data analysis, and applying concepts to real-world issues.

T1 – CELLS

T2 – ORGANISATION

T3 – DIVERSITY

T4 – HEREDITY

Chemistry

Ideal for students interested in chemistry, medicine, engineering, environmental science, pharmacy, or any STEM-related career. Suits students who enjoy quantitative problem-solving, practical laboratory work, and applying scientific principles to real-world applications.

T1 – MATTER

T2 – QUANTITATIVE

T3 – REACTIVE

T4 – DRIVERS

Science - Physics

Ideal for students interested in physics, engineering, astronomy, medicine, technology or any STEM-related career. Suits students who enjoy mathematical problem-solving, practical investigations, and understanding the fundamental laws that govern the physical world.

T1 – KINEMATICS

T2 – WAVES

T3 – ELECTRICITY

T4 – MECHANICS

Health and Movement Science (PDHPE)

Designed for all students in Year 11 and 12 who have an interest in this area. A good base for those who wish to pursue a career in any sporting, recreation or health related fields.

T1-2 – HEALTH

T3-4 – MOVEMENT

BODY SYSTEMS

PERFORMANCE

English (Standard)

English Standard is designed to strengthen students' communication, analytical, and critical thinking skills for further study, work, and everyday life. The course provides comprehensive coverage of essential English concepts through the study of a wide range of contemporary and classic texts, preparing students for success beyond school.

T1 – THE GIVER

T2 – MORRIE

T3 – INTO THE WILD

T4 – 1984

Mathematics & Humanities

Five subjects in this faculty group.

Mathematics - Advanced

Ideal for students with strong mathematical ability who enjoy abstract thinking, problem-solving, logical reasoning and proof. Suits students planning further studies in mathematics, physical sciences, engineering, economics, or any field requiring advanced quantitative skills.

T1 – FUNCTIONS

T2 – DIFFERENTIATION

T3 – EXPONENTIAL

T4 – CALCULUS

Mathematics - Standard

Suited to students who want practical, applied mathematics for everyday life, work and further study. Ideal for those entering the workforce or undertaking tertiary training that requires numeracy, financial literacy, data analysis and measurement.

T1 – ALGEBRA

T2 – FINANCE

T3 – STATISTICS

T4 – PROBABILITY

Modern History

Suits students who enjoy analysing historical events, interpreting sources, evaluating different perspectives and writing extended responses. Ideal for those considering careers in law, journalism, government, international relations, teaching.

T1 – INDIGENOUS

T2 – IMPERIALISM

T3 – INQUIRY

T4 – 1919-1939

Geography

Suits students interested in the world around them, environmental issues, human impacts on the planet, and global challenges. Ideal for careers in environmental management, urban planning, sustainability, international development, teaching.

T1 – EARTH SYSTEMS

T2 – HUMAN ENV.

T3 – PATTERNS

T4 – INQUIRY

Legal Studies

Suits students interested in law, justice, government, journalism or any field requiring strong analytical, research and writing skills. Academically rigorous with significant emphasis on legal writing, case studies and evaluation of contemporary issues.

T1 – LEGAL SYSTEM

T2 – INDIVIDUAL

T3 – PRACTICE

T4 – CRIME

SUBJECT SUMMARY

Business, Design & Practical

Five subjects in this faculty group.

Business Studies

Ideal for students interested in careers in business, finance, marketing, management, law, media or employment relations. Suits students who enjoy analysing real-world business issues, case studies, essay writing and applying mathematical concepts to business situations.

T1 – NATURE

T2 – MANAGEMENT

T3 – PLANNING

T4 – OPERATIONS

Economics

Suited to students who wish to follow careers in business, finance, media, law, marketing, or employment relations. Requires an interest and ability to analyse, problem-solve, interpret data and discuss economic issues, together with strong essay writing skills.

T1 – CONSUMERS

T2 – MARKETS

T3 – FINANCIAL

T4 – GLOBAL

Enterprise Computing

Ideal for students interested in information technology, data science, cybersecurity, networking, software development, and enterprise systems. Suits students who enjoy working with data, designing digital solutions and exploring emerging technologies.

T1 – MEDIA/UX

T2 – NETWORKS

T3 – CYBERSEC.

T4 – DATA

Design and Technology

Suited to creative students who have an interest in making products and learning about styles, techniques, innovation and emerging technologies. Ideal for those considering careers in design, engineering, industrial arts, architecture or any field requiring creative problem-solving.

T1 – FOUNDATIONS

T2 – COLLABORATIVE

T3 – MANUFACTURING

T4 – INTEGRATION

Food Technology

Open to all students. The learning experiences will extend a student's understanding and application of food technology in both vocational and life experiences.

T1 – AVAILABILITY

T2 – QUALITY

T3 – NUTRITION

T4 – INDUSTRY

SUBJECT SUMMARY

Computing, Arts, Community & Lifestyle

Five subjects in this faculty group.

Software Engineering

Ideal for students interested in computer science, software development, information technology, cybersecurity, or engineering careers. Suits students who enjoy programming, problem-solving, logical thinking and exploring real-world applications of technology.

T1 – FUNDAMENTALS

T2 – OOP

T3 – MECHATRONICS

T4 – SECURE ARCH.

Visual Arts

Suited to creative students who have some talent and interest in making artworks and learning about styles, techniques, and movements. Helps build conceptual, practical and critical skills for diverse fields including art, design, employment and further learning.

T1 – CUTTING EDGE

T2 – THINKING BIG

T3 – BODY LANG.

T4 – HISTORICAL

Community & Family Studies

Suited to students with an interest in issues relating to individuals, families, groups and communities in society. Particularly beneficial for careers in teaching, nursing, social work or childcare. Students need strong research, organisational and writing skills.

T1 – RESOURCES

T2 – GROUPS

T3 – FAMILIES

T4 – RESEARCH

Exploring Early Childhood

Of particular benefit to students who may consider a vocational interest in teaching, nursing, social work, or childcare. Suits students who enjoy practical interactions with children, research, discussion of social issues, and creative projects.

T1 – PREGNANCY

T2 – DEVELOPMENT

T3 – FAMILY

T4 – WELLBEING

Sport, Lifestyle & Recreation

Suited to students with an interest in Sport Science, Physical Education and human movement. Provides viable post-school study and career pathways, including credit transfer opportunities into TAFE, and prepares students for roles in the growing sport and recreation industry.

T1 – FITNESS

T2 – HEALTHY LIFE

T3 – RESISTANCE

T4 – OUTDOOR

Frequently Asked Questions



Even with the best planning, a few questions can pop up as you settle into your homeschooling rhythm, and that's completely normal. Our goal is to keep things simple, flexible, and stress free so you can focus on what matters most: your child's learning and enjoyment.

1 What if my child changes their mind about university?

That's completely okay. If your child initially enrolls in the Assessment-Free Pathway but later decides they would like formal assessments and university preparation support, please contact the [Euka team](#) to discuss pathway options.

2 What if my child struggles with independent learning?

Many students need time to adjust to the flexibility of homeschooling. Creating routines, regular check-ins, and achievable goals can make a huge difference. Over time, most students become increasingly confident and independent.

3 Are there strict assignment deadlines?

Not at all! The senior program is fully self-paced. Students have 365 days of access and can complete and submit assignments at any point during their enrolment access period.

4 Can assignments be resubmitted for marking?

Yes! Students in the Assessed/University Pathway are encouraged to improve and resubmit work based on teacher feedback.

5 Can my child change subjects?

Yes! Subjects can be changed at any point in your enrolment and this can be actioned via the Parent Portal. Subject changes are free within the first two weeks of selecting them; after that, a small change fee applies. Reach out to the Euka team if you have any questions.

6 What if I cannot find the novel?

No problem at all. We've selected popular, widely available novels so you have a range of options. You can listen to audiobooks on platforms like YouTube or Spotify, download PDF versions that may be available online, or borrow a physical copy from your local library. If you're still having trouble, please reach out via [support chat or email](#).

7 What if my child needs video content?

Our lessons are intentionally designed without embedded videos to help children stay focused and avoid unnecessary online distractions. However, if a video would support your child's understanding, each lesson includes a clear focus and curriculum outcomes which can be used to find relevant, high quality videos online.

8 What if I don't have materials for a practical activity?

All practical activities are optional and can be skipped if they don't suit your situation. If you'd still like to complete the activity, you can adapt it in a way that works for you, such as drawing, painting, or describing the concept instead. Homeschooling is flexible and designed to suit your home environment.

A few more answers.

9 What if my child doesn't want to complete all parts of the lesson?

That's completely okay. We recommend focusing on the "Learn" section, as it introduces the key concepts. The remaining sections can be completed or skipped based on what works best for your child. You can still mark the lesson as complete even if some sections are not finished.

10 Can students study while travelling or working?

Absolutely. The flexibility of the Euka senior program makes it ideal for families balancing travel, work, sport, health needs, or alternative lifestyles.

You've got this, and we've got you.

Whether your child is preparing for university, exploring career pathways, building confidence, or simply seeking a more flexible way to complete their education — Euka is your partner. Reach out any time via our [Contact Us](#) page, your [Parent Portal](#), or the [Help Centre](#).



You've got this. We've got you.

Senior years should feel flexible, supportive, and empowering — not overwhelming.
We're here to walk alongside you and your student every step of the way.

GET IN TOUCH

euka.edu.au/contact

PARENT PORTAL

portal.euka.edu.au

HELP CENTRE

help.euka.edu.au