

THE COMPLETE GUIDE TO CONFIDENT HOMESCHOOLING

MODULE 07

Motivation, wellbeing, and engagement.

Keeping learning positive and sustainable long-term.

PRESENTED BY

Brett & Ellen



IN THIS MODULE

Motivation, wellbeing, and engagement.

- 01 Rebuilding confidence through homeschooling.
- 02 Recognising healthy engagement versus burnout.
- 03 Practical strategies for motivation and re-engagement.
- 04 Signs of struggle and how to prevent overwhelm.
- 05 Socialisation and building meaningful connections.



SUSTAINABLE, NOT JUST PRODUCTIVE

The long game is what matters.

A child who learns hard for six weeks and then crashes hasn't won. A child who sustains steady, curious learning for a year has. Motivation and wellbeing aren't soft topics, they're what makes the whole thing possible.

WHAT WE MEAN BY SUSTAINABLE

Steady pace, not sprint pace. Six months of consistent learning beats six weeks of intensity.

Energy is finite. Their concentration, your patience, the family's bandwidth. All renewable, none infinite.

Wellbeing is the foundation. A regulated child can learn anything. A dysregulated one can't learn much.

Motivation is built, not pulled out. It comes from progress, autonomy, and being seen.

A NOTE FROM BRETT & ELLEN

If you're choosing between covering more content and protecting your child's wellbeing, protect wellbeing every time. The content will keep.



CONFIDENCE, REBUILT

Rebuilding confidence through homeschooling.

Many children come to homeschooling carrying a confidence dip, from comparison, anxiety, repeated struggle, or just not feeling seen. Rebuilding takes time, and it happens in small moments, not big interventions.

Start with what they can do. Confidence is built on wins, not on tackling weaknesses first.

Let them set the pace. Choice over the order of work returns a sense of agency.

Make progress visible. A simple tracker, a wall of completed work, a milestone celebrated.

Name the growth out loud. "Six months ago you couldn't do that. Look at you now."



READING THE SIGNALS

Recognising healthy engagement versus burnout.

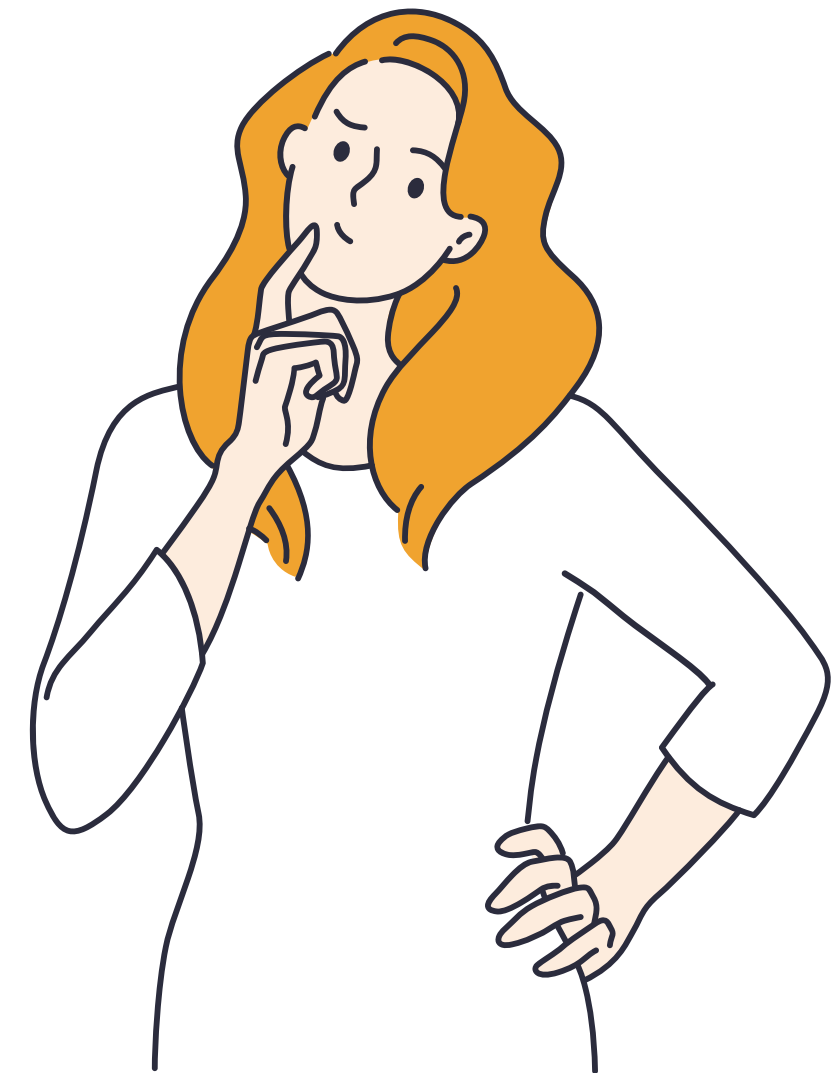
Engagement and exhaustion can look similar from the outside. Learning to tell them apart is one of the most useful skills a homeschool parent develops.

Healthy engagement. Curious, asking questions, willing to struggle, recovers quickly from setbacks.

Healthy tiredness. Wants a break, takes one, comes back. Normal end-of-day fatigue.

Early burnout. Avoidance dressed up as boredom. Tasks taking three times as long for no clear reason.

Deeper burnout. Withdrawal, mood changes, physical symptoms, dread of the day. A signal to slow down, not push through.



WHAT HELPS THEM RE-ENGAGE

Practical strategies for motivation and re-engagement.

Motivation isn't a switch you flip. It's a set of conditions you create. When motivation dips, the lever is rarely "try harder" — it's usually "change something small".

Change the surface. New location, new time of day, work outside, work standing up.

Make it visible. Tick boxes, progress bars, completion charts. Visible momentum builds real momentum.

Lower the barrier to start. "Just do the first question" is easier than "do the whole lesson".

End on a win. Finish the day on something they enjoy or are good at. They'll start tomorrow more willingly.



BEFORE IT TIPS OVER

Signs of struggle and how to prevent overwhelm.

Overwhelm is rarely about one bad day. It's the slow accumulation of small things. Catching it early is the whole job.

Signs to watch for. Sleep changes, appetite changes, increased irritability, withdrawal from things they used to enjoy.

Reduce the load early. Cut a subject for the week. Drop the optional. Protect the basics.

Move it outside. Fresh air, walking, the natural world. The fastest reset for most children.

Talk less, listen more. Sometimes the right response to "I can't do this" is a quiet hour together, not a strategy.

A PRACTICAL TIP

Build in a recovery week each term. Lighter load, more freedom. It's not lost time; it's what makes the rest of the term work.



REAL CONNECTION

Socialisation and building meaningful connections.

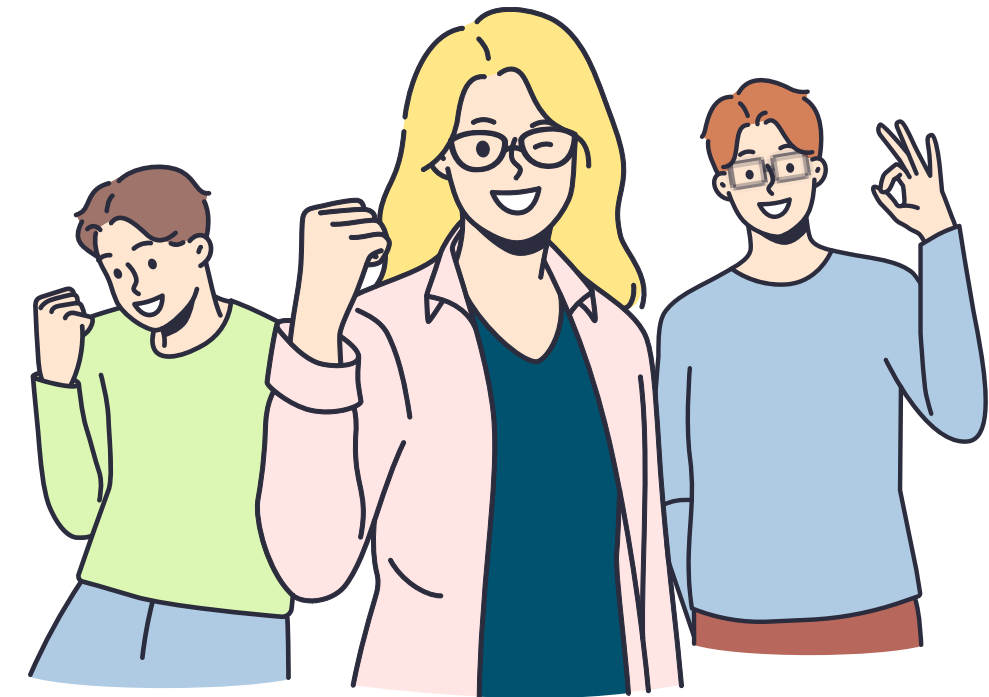
Homeschooled children aren't isolated, they're often more socially capable than their schooled peers, because their social time is intentional rather than incidental. But connection has to be built deliberately, not assumed.

Quality over quantity. Two real friendships beat twenty surface ones.

Mixed ages. Homeschooling naturally mixes younger and older. This is a strength.

Community over playdates. Co-ops, sports clubs, drama groups, churches, scouts. The structure helps consistency.

The wider world counts. Conversations with shopkeepers, neighbours, family friends. All social development.



THE EUKA INSIGHT

Flexible pacing, reduced pressure, real re-engagement.

Euka's flexible pacing, reduced pressure, and structured support help students rebuild confidence and re-engage with learning, especially those who have struggled in traditional school environments.

WHAT THIS MEANS IN PRACTICE

- Self-paced lessons that meet your child where they are.
- Reduced pressure, with clear structure underneath.
- Self-marking quizzes give progress signals without grading anxiety.

REFLECTION

Two questions to sit with.

QUESTION 01

What does your child look like when they're thriving?

QUESTION 02

What does early burnout look like for them, and what would you do differently next time you see it?

